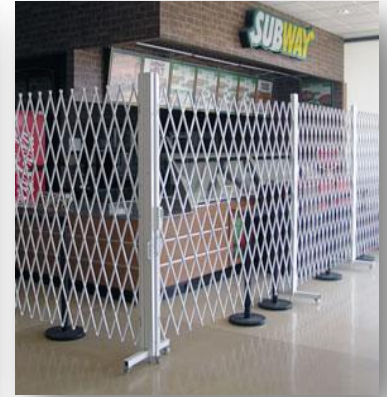




# Xpanda Security Gate Specifications



## SPECIFICATIONS

Quality tubular scissor style security gates for storefront protection, warehouse security and safety applications. **Lattice**

1/2"x 1/2" tubular 18 gauge steel, cold rolled sections, with a carbon content Of 0.60% to ensure maximum strength and rigidity

### Channels

16 gauge Steel sections hot rolled into U-channels with a carbon content of 0.10 % for superior Strength.

### Rivets

Aluminum alloy with a 3.5% Manganese content for maximum strength. and wear ability

### Fittings

All moving parts and components are made from glass filled Nylon 6 and at-Metal on metal wear points

### Finish

Products are Polyester coated using top quality Polyester powder with UV resistant capability. The electrostatic process is used to ensure consistent coverage.

Colors available Black, White, Gray and safety Yellow

### Warranty

Warranty is 12 months. On normal wear & tear

info@storefrontprotection.com  
1-800-835-0214  
www.storefrontprotection.com

